

LIDO MINI

Features:

- Tri-track or surface mounting
- Compatible with Steon® tri-track or others (please consult our technical department)
- Energy efficient chip-on-board (COB) LEDs
- Available in 3000K (warm white) and 4000K (cool white)
- 30° optical reflector as standard
- Average 50,000 hrs LED life - L80 B10
- No ultraviolet (UV) or infrared (IR) rays
- Excellent thermal management – self dissipating precision heat sink
- Rotates through two axes:
 - Horizontal orientation 350°
 - Vertical tilt 350°

Options:

- 27W versions in CRI 90 are available - on special request
- PRO ECO® (wireless testing & control system) available – on request

Accessories:

- Optical reflectors available:
 - 17°, 55° or 70°
- Glass filter and cone for food display applications
- Honeycomb dark light and cone

Material:

- Body: die-cast aluminium
- Reflector: thermoplastic

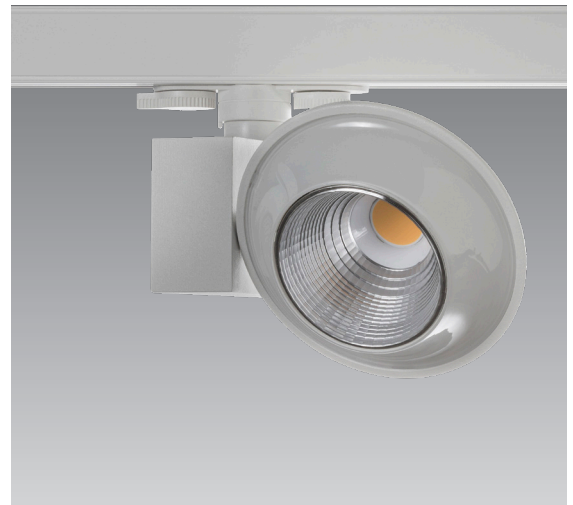
Finish:

- Body: powder coated
- Reflector: vacuum metallised

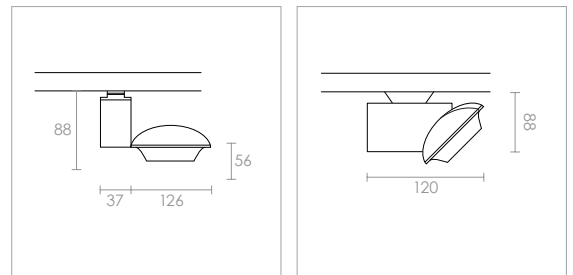
Colours:

- 01 White
- 02 Black
- 03 Metallic Grey (on special request - minimum order quantities may apply)

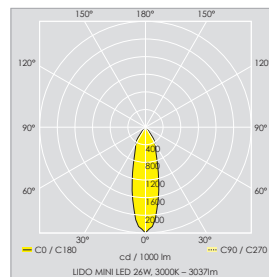
Beam Angles:



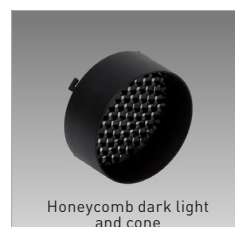
Technical



Photometrics



Accessories





| Lido Mini | | | | | | Ordering Code | |
|---|--------------------|------------|------------------|-------------------|-----------|----------------|----------------|
| Tri-Track Mounting | Colour Temperature | LED Lumens | Delivered Lumens | Luminous Efficacy | Beam | White | Black |
| 18W LED | 3000K | 2400lm | 2136lm | 119lm/W | 30° (Sym) | 10-131-000-301 | 10-131-000-302 |
| 18W LED | 4000K | 2450lm | 2180lm | 112lm/W | 30° (Sym) | 10-131-000-401 | 10-131-000-402 |
| 26W LED | 3000K | 3350lm | 3037lm | 117lm/W | 30° (Sym) | 10-132-000-301 | 10-132-000-302 |
| 26W LED | 4000K | 3400lm | 3084lm | 119lm/W | 30° (Sym) | 10-132-000-401 | 10-132-000-402 |
| 27W LED | 3000K | 3150lm | 2917lm | 108lm/W | 30° (Sym) | 10-133-000-301 | 10-133-000-302 |
| 27W LED | 4000K | 4000lm | 3705lm | 137lm/W | 30° (Sym) | 10-133-000-401 | 10-133-000-402 |
| Surface Mounting (With Base) | | | | | | | |
| 27W LED | 3000K | 3150lm | 2917lm | 119lm/W | 30° (Sym) | 10-141-000-301 | 10-141-000-302 |
| 27W LED | 4000K | 4000lm | 3705lm | 137lm/W | 30° (Sym) | 10-141-000-401 | 10-141-000-402 |
| Accessories | | | | | | Ordering Code | |
| Glass filter and cone for food display applications | | | | | | A10-09-01-00 | |
| Honeycomb dark light and cone | | | | | | A10-09-02-00 | |
| 17° optical reflector | | | | | | A10-08-01-00 | |
| 55° optical reflector | | | | | | A10-08-02-00 | |
| 70° optical reflector | | | | | | A10-08-03-00 | |